

# ALL YOU NEED TO KNOW ABOUT **CONNECTIVITY**

A decent internet connection is crucial for all schools. Speed matters, but so does security and safety.

## **Education Grade vs Consumer Grade**

*Fast and consistent*

EAD Leased Line

EoFTTC

*Shared and variable speeds*

ADSL

FTTC

FTTP is shared, but the fast speeds can compensate for this

## **Cyber Security**

A hardware firewall is crucial for any educational connection but is really just the first line of defence.

The [NCSC](#) provide further guidance to help train staff and harden your internal systems to reduce your vulnerability to a damaging cyber crime or attack.

## **Content Filtering**

[IWF](#) based filtering should differentiate for different types of users in your school.

Quality reports and alerts are crucial. Cloud based filtering protects users working off the school network. Filtering need not be tied to your connectivity contract and can be procured separately.

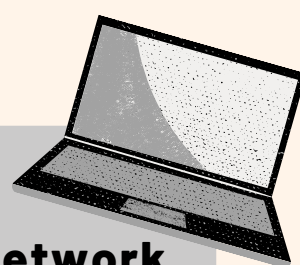
Getting the right combination of connection, security and filtering is key. Procuring these elements separately can provide better value and ensure a better fit to your needs.



## **Wifi**

The state of your school wireless infrastructure can have as big an impact on your online experience as the internet connection itself.

Consider a review of your WIFI equipment, Modern wireless access points from companies like [Ubiquiti](#) offer the latest technology and ability to support many devices at a reasonable price.



## **Your cabled network**

As with your WiFi, the network cabling and network switches that connect your infrastructure can be a bottleneck.

Your cabled network should operate at 1 Gbps. Consider a review of your network switches to ensure that they are fit for purpose and are not transferring data at a slower speed than your internet connection itself!